

2024 AAPI Voter Demographics | INDIANA

111,690

ELIGIBLE AAPI VOTERS*

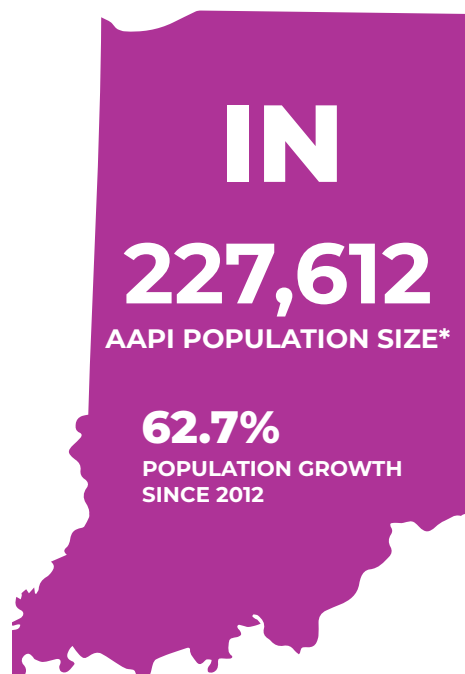
57.6%

AAPI VOTER ELIGIBILITY
GROWTH (2012-2022)

2.21%

AAPI SHARE OF
ELECTORATE IN INDIANA

* Includes multi-racial population



67,114

FOREIGN BORN
NONCITIZENS

58,316

FOREIGN BORN
CITIZENS

92,404

NATIVE BORN
CITIZENS

COUNTIES WITH HIGHEST AAPI POPULATIONS

	AAPI Share of County Pop	Size of AAPI Population	AAPI Eligible Voter Share of County	Number of AAPI Eligible Voters
Marion County	4%	38,403	5.7%	14,938
Hamilton County	6.5%	22,705	9.3%	10,573
Allen County	4.8%	18,362	6.7%	7,409
Tippecanoe County	7.8%	14,594	10.8%	5,573
Monroe County	6.6%	9,238	8.3%	3,490

LARGEST ASIAN AMERICAN ETHNIC GROUPS IN INDIANA

Asian Indian (52,332)	Chinese, except Taiwanese (38,234)	Burmese (27,674)	Filipino (26,879)	Korean (15,739)	Japanese (12,843)
---------------------------------	--	----------------------------	-----------------------------	---------------------------	-----------------------------

LARGEST NHPI ETHNIC GROUPS IN INDIANA

Native Hawaiian (2,317)	Samoan (1,020)	Chamorro (819)
-----------------------------------	--------------------------	--------------------------

2024 AAPI Voter Demographics | INDIANA

AAPI CITIZEN VOTING AGE POPULATION (CVAP)

30.5%

Voters aged 50+

33.3%

Voters aged 18-29

VOTER ENGAGEMENT *(National Level Data)*

- Voter contact falls short for AAPIs. In the 2022 Asian American Voter Survey (AAVS), 56% of Asian Americans had no or uncertain contact from the Democrats. 66% reported the same from the Republicans.
- Of contacted Asian American registered voters, 44% reported outreach from Democrats, 35% from Republicans, 39% from community groups. Comparatively, in 2016, 48% reported Democratic outreach, 16% from the Republicans.
- 37% of registered Asian Americans did not identify with either party, signaling need and opportunity for voter education via outreach.

IMPORTANCE OF LANGUAGE ACCESS

Per the 2022 AAVS, of Asian Americans speaking non-English languages at home, 11% reported language barriers to voting and 42% stated voting assistance in their language would be utilized. *(National level data).*

59.9% of Asian American adults in IN **speak a language other than English at home.**

34% of Asian American adults in IN are **Limited English Proficient** (speak English less than “Very well”)

Chinese (22,817) **Burmese** (12,586) **Tagalog** (10,087) **Punjabi** (9,523) **Hindi** (8,783)

TOP 5 ASIAN LANGUAGES SPOKEN IN INDIANA

Hawaiian (117) **Marshallese** (108)

TOP NHPI LANGUAGES WITH 100+ ESTIMATED SPEAKERS IN INDIANA

SOCIOECONOMIC CHALLENGES IN INDIANA



About 13.2% Asian Americans and 17.3% NHPIs in Indiana live in poverty.



About 7.8% Asian Americans and 8.7% NHPIs in Indiana lack health insurance.



About 15.1% Asian Americans and 30.3% NHPIs in Indiana lack broadband access.