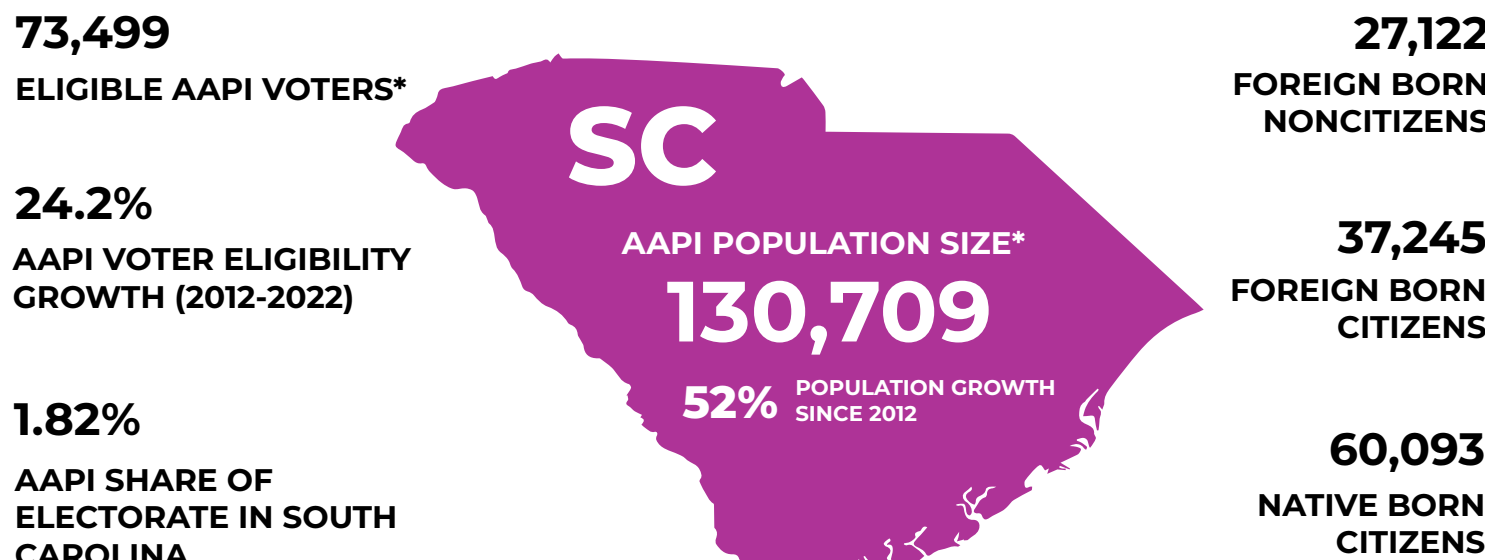


2024 AAPI Voter Demographics | SOUTH CAROLINA



* Includes multi-racial population

COUNTIES WITH HIGHEST AAPI POPULATIONS

	AAPI Share of County Pop	Size of AAPI Population	AAPI Eligible Voter Share of County	Number of AAPI Eligible Voters
Greenville County	2.5%	13,467	3.5%	7,199
Richland County	2.9%	12,221	3.9%	5,965
York County	2.7%	7,623	3.7%	3,530
Spartanburg County	2.3%	7,464	3.1%	4,565
Charleston County	1.8%	7,396	2.3%	4,992

LARGEST ASIAN AMERICAN ETHNIC GROUPS IN SOUTH CAROLINA

Asian Indian (28,950)	Filipino (23,971)	Chinese, except Taiwanese (18,586)	Vietnamese (12,477)	Korean (9,844)	Japanese (7,700)
---------------------------------	-----------------------------	--------------------------------------------------	-------------------------------	--------------------------	----------------------------

LARGEST NHPI ETHNIC GROUPS IN SOUTH CAROLINA

Native Hawaiian (2,570)	Chamorro (1,344)	Samoan (976)
-----------------------------------	----------------------------	------------------------

2024 AAPI Voter Demographics | SOUTH CAROLINA

AAPI CITIZEN VOTING AGE POPULATION (CVAP)

36.3%

Voters aged 50+

26.4%

Voters aged 18-29

VOTER ENGAGEMENT *(National Level Data)*

- Voter contact falls short for AAPIs. In the 2022 Asian American Voter Survey (AAVS), 56% of Asian Americans had no or uncertain contact from the Democrats. 66% reported the same from the Republicans.
- Of contacted Asian American registered voters, 44% reported outreach from Democrats, 35% from Republicans, 39% from community groups. Comparatively, in 2016, 48% reported Democratic outreach, 16% from the Republicans.
- 37% of registered Asian Americans did not identify with either party, signaling need and opportunity for voter education via outreach.

IMPORTANCE OF LANGUAGE ACCESS

Per the 2022 AAVS, of Asian Americans speaking non-English languages at home, 11% reported language barriers to voting and 42% stated voting assistance in their language would be utilized. *(National level data).*

53.8% of Asian American adults in SC **speak a language other than English at home.**

25.4% of Asian American adults in SC are **Limited English Proficient** (speak English less than “Very well”)

Chinese (10,071) **Tagalog** (8,836) **Vietnamese** (7,836) **Gujarati** (6,179) **Hindi** (5,145)

Other Eastern Malayo-Polynesian languages (256) **Chamorro** (119)

TOP 5 ASIAN LANGUAGES SPOKEN IN SC

TOP NHPI LANGUAGES WITH 100+ ESTIMATED SPEAKERS IN SC

SOCIOECONOMIC CHALLENGES IN SOUTH CAROLINA



About 9.7% Asian Americans and 19.8% NHPIs in South Carolina live in poverty.



About 9.6% Asian Americans and 16% NHPIs in South Carolina lack health insurance.



About 9.4% Asian Americans and 25.8% NHPIs in South Carolina lack broadband access.